



Windmills
of Your
Mind

Whitefield





Located in the vicinity of the best international schools, hospitals, malls and five-star hotels, **Windmills of Your Mind** is our flagship project built on a 24-acre property on the edge of a small lake in Whitefield - the IT hub of India's Silicon Valley. Whitefield's urbane culture and lifestyle have made it home to well-travelled professionals and is one of the best investment destinations in India.

Set on a verdant expanse of greenery, **Windmills of Your Mind** comprises simplex, duplex, triplex apartments and villas of high aesthetic and construction standards. The property encompasses a total of 1.75 million sq.ft. of residential space including seven 19 storey buildings and villas, offering C20, D60 apartments and V40 villas.

Nature resonates throughout the property from the green rooftops of the villas and community center, to the terrace gardens of individual apartments. In fact, the horizontal landscaped green surface area in the project is larger than the land on which it is built. With over 3000 trees interspersed within the property, this is arguably the greenest space in Bangalore.

The cantilevered terrace gardens in the apartment are fitted with sprinklers and drip irrigation systems. Homeowners grow papayas, bananas, strawberries, tomatoes, green chillies and okra on their roofs.

The commitment to sustainability is reflected in architectural design and infrastructure: wells and storm water drains recharge the groundwater every 30 meters, custom ceramic discs in each faucet reduce water consumption, and the green rooftops & terraces make the air better.

The internal roads on the premises are paved in cobblestones. Each stone has been carefully cut from large blocks of granite, and is then treated by skilled craftsmen.



Clubhouse and Swimming Pool

A centrally located clubhouse provides recreational space and has an indoor heated pool, tennis, badminton and squash courts, a well-equipped gymnasium, a children's library and a large high-ceilinged party hall. A theatre and a café is also present.

Our commitment to quality extends well beyond the customisation and delivery of your home. We assume responsibility for property maintenance which includes a comprehensive slew of services that ensure competent and timely care of your home.

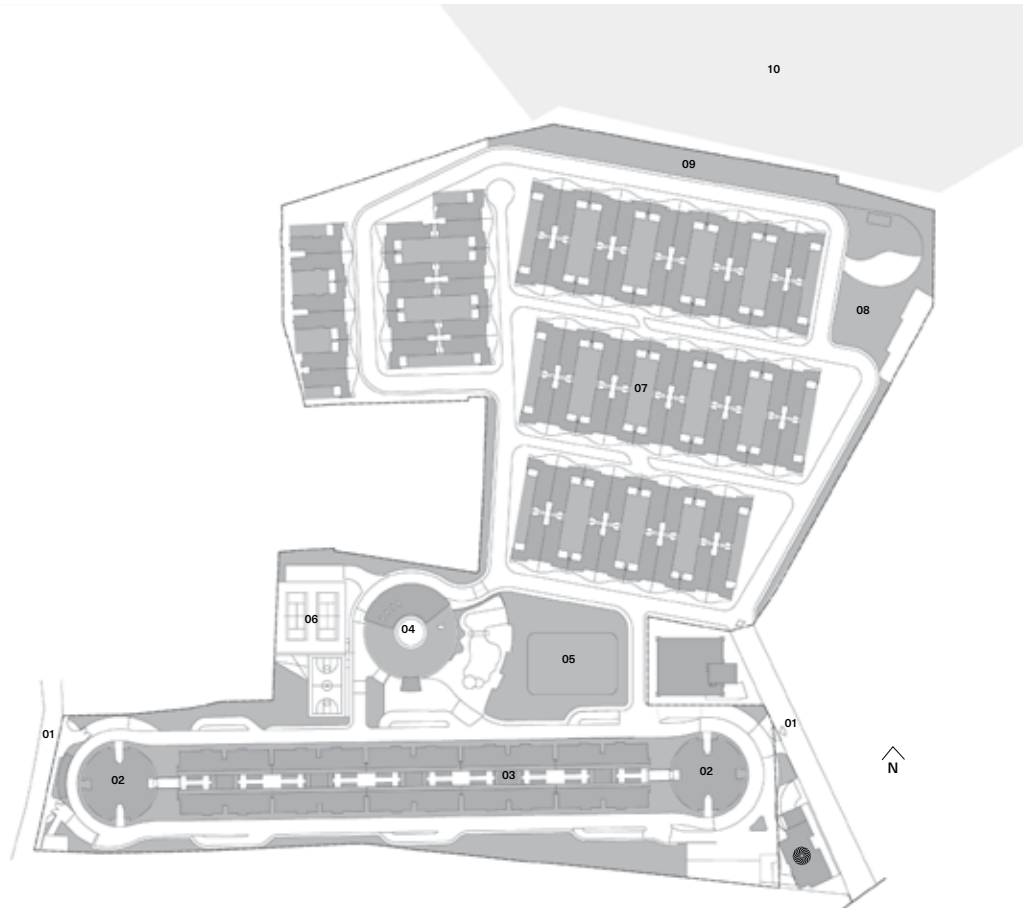
Windmills of Your Mind is a secluded haven with majestic trees and a tranquil lake next door. A multitude of birds – Egrets, Purple Swamp Hen, Cormorants, Oriental Magpie Robins, Jungle Mynahs, Painted Storks and other endogenous & migratory species are seen throughout the year.

Flowers are in resplendent bloom all year round. Life is a leisurely vacation in this sublime sanctuary, soothing the mind and recharging the soul.

Then there is **Windmills Craftworks**, located adjacent to the project, a microbrewery, jazz theatre and multicuisine restaurant, complemented by a rare collection of books on architecture, design and art.

Oota Bangalore is here as well and celebrates the culinary heritage of Karnataka with a gastronomical journey through its diverse regions: The cuisine traverses the Western Ghats northwards from Coorg to Malnad, and from Mangalore to North Canara along the Konkan coast, to North Karnataka, before circling down to unique delicacies from Bangalore, Mysore and South Karnataka.

Master Plan

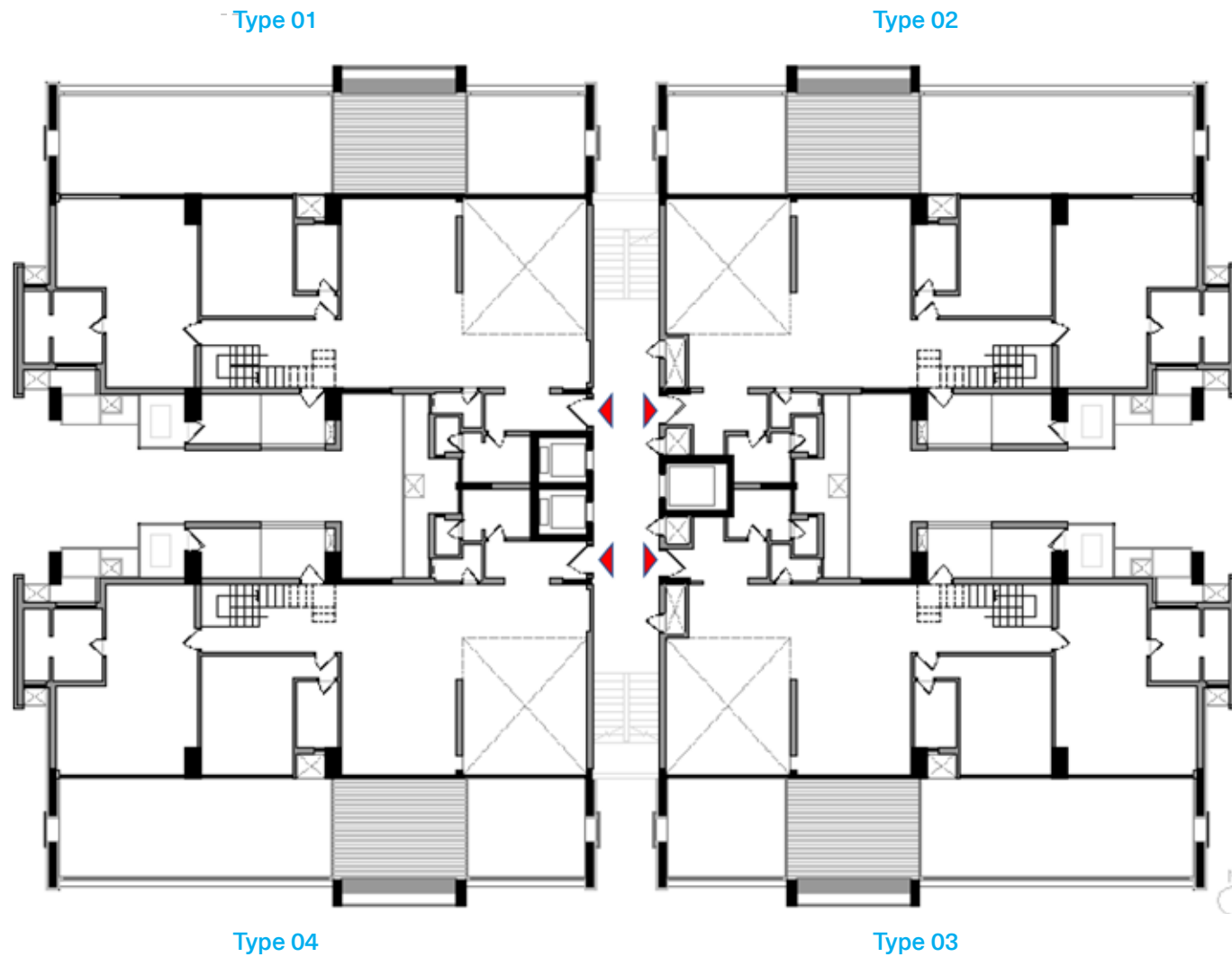


Legend

- 01 Entry/Exit
- 02 Circular Tower
- 03 Duplex Tower
- 04 Clubhouse
- 05 Central Greens
- 06 Tennis & Basketball Court
- 07 Villas
- 08 Children Play Area
- 09 Lakeside Walkway
- 10 Lake
- Windmills Craftworks, Terrace and Oota

Block Plan

Tower 2-6, Lower Level

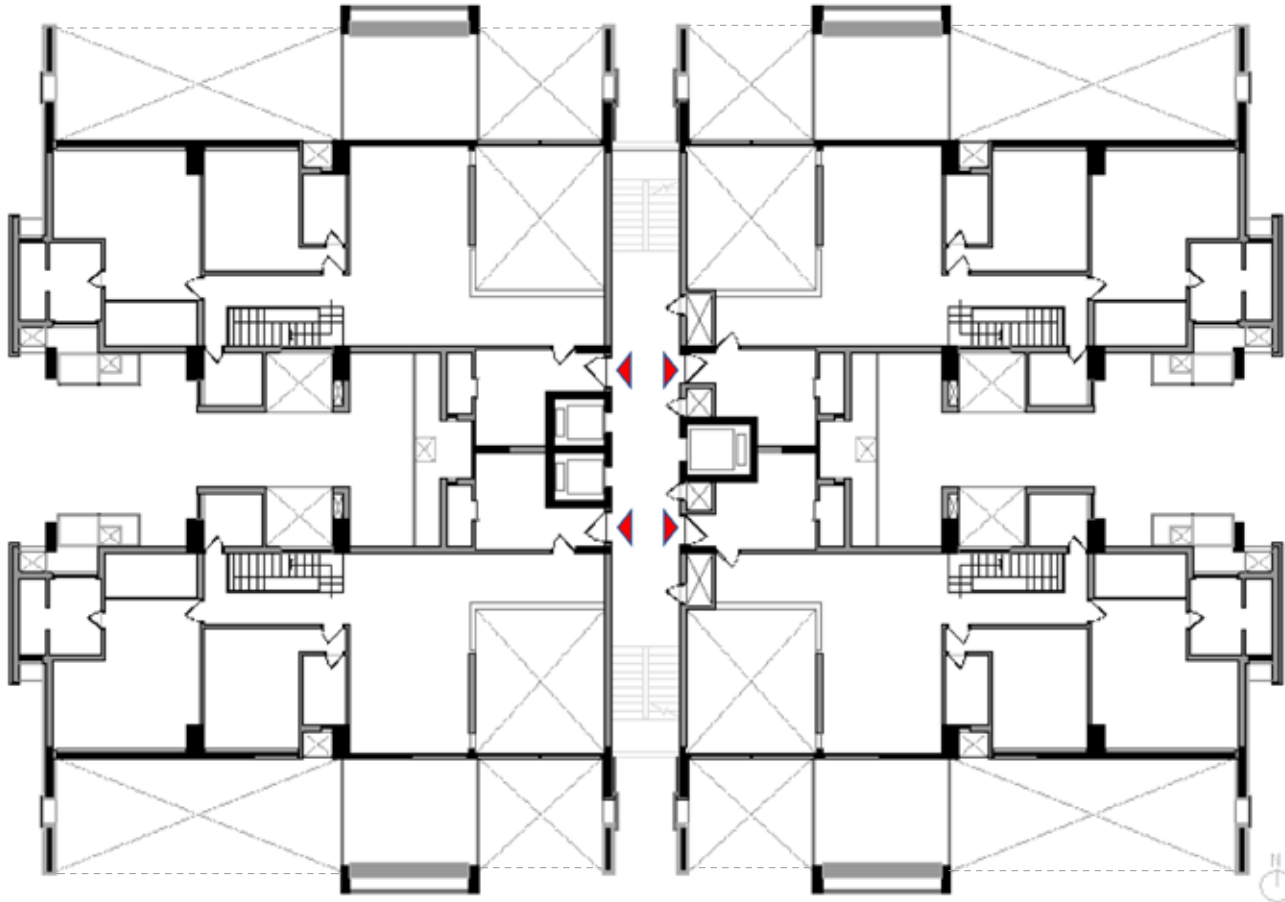


Type 01

Type 02

Block Plan

Tower 2-6, Upper Level



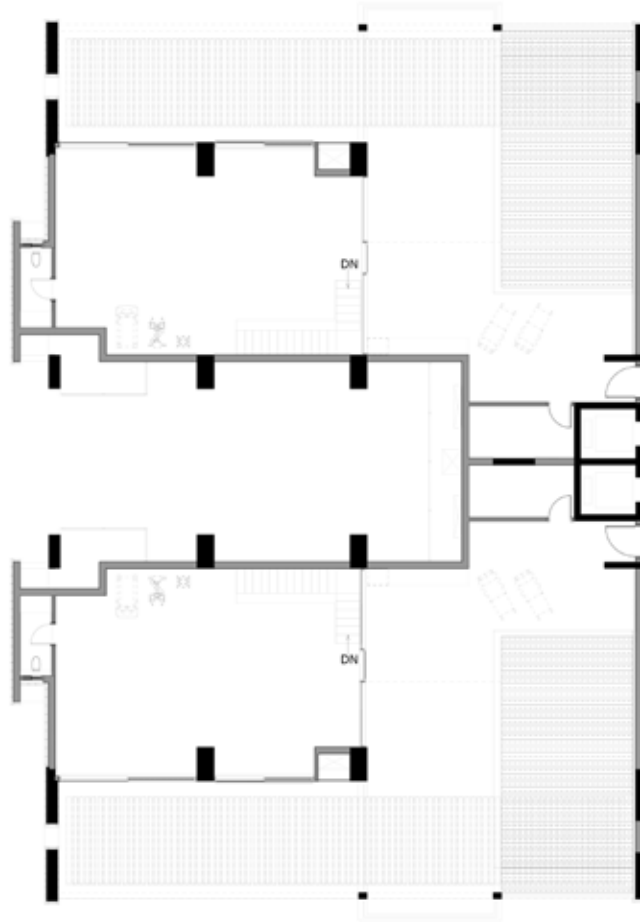
Type 04

Type 03

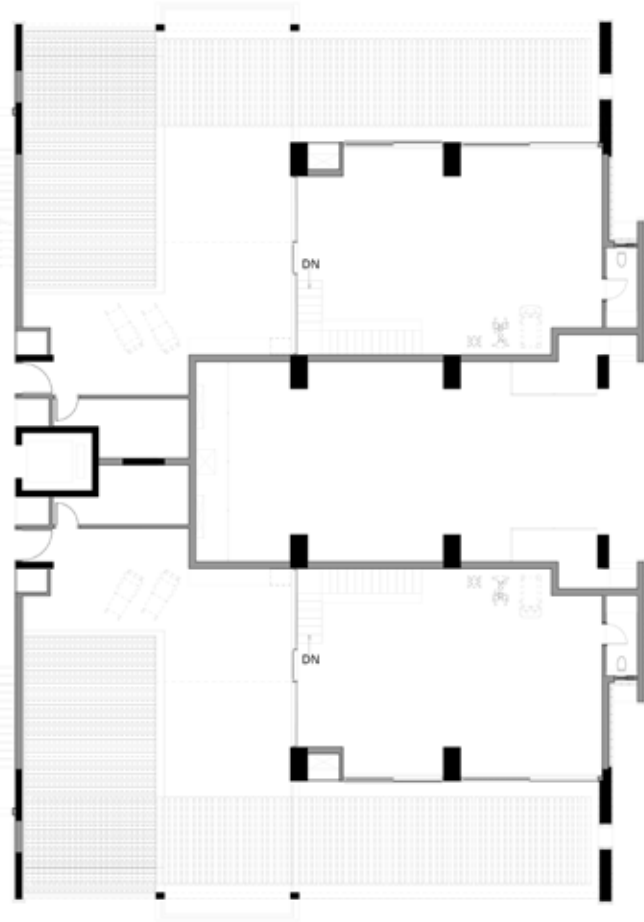
Block Plan

Tower 2-6, Penthouse

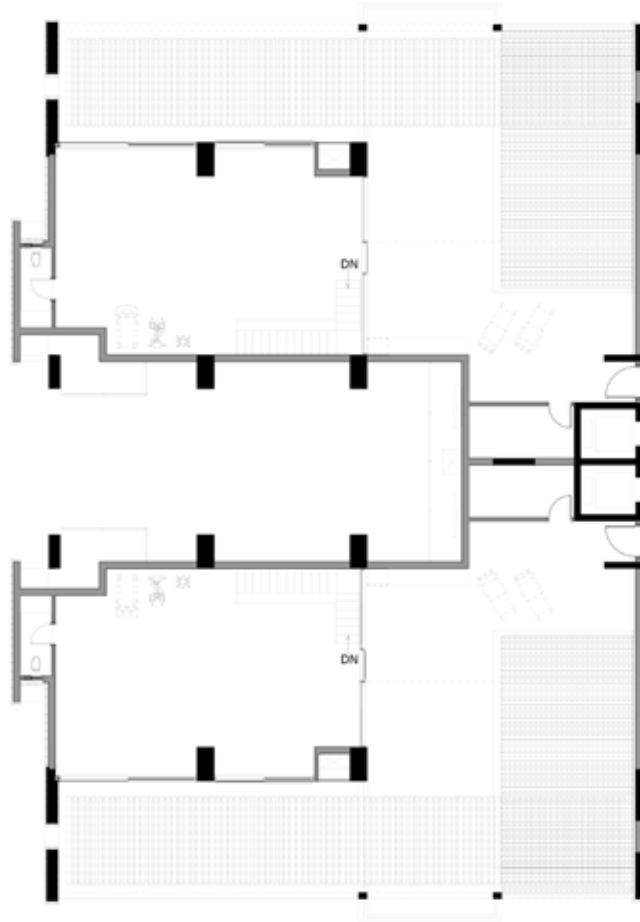
Type 01



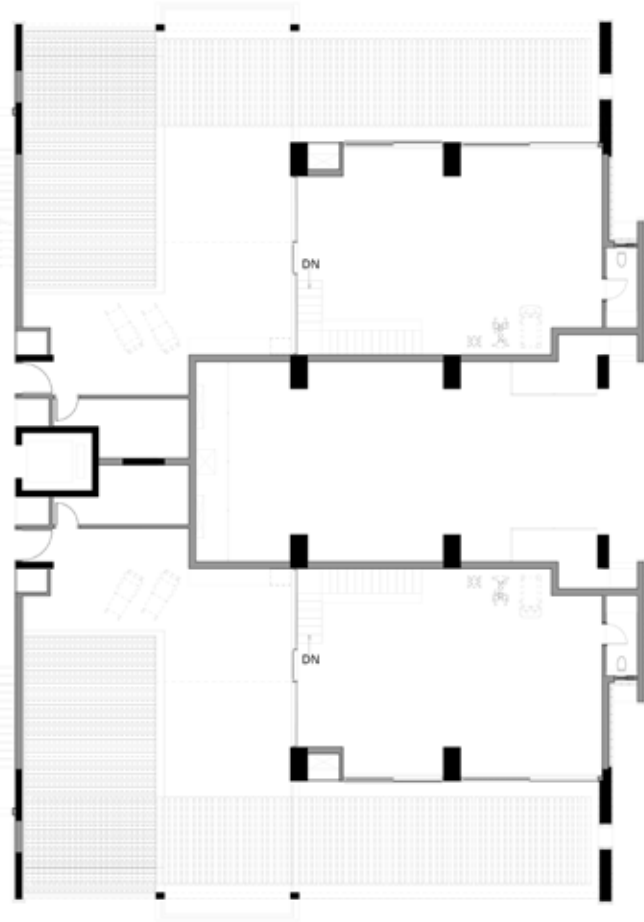
Type 02



Type 04



Type 03







Location Map



Legend

- Schools
 - Hospitals
 - Upcoming Metro Station
 - Shopping Malls
 - Hotels & Restaurants
 - Metro Line
- 15.4 Km to MG Road
 43.7 Km to Bangalore International Airport
 15.4 Km to The International School, Bangalore
 15.4 Km to Inventure Academy

Amenities

- Swimming Pool
- Heated Pool
- Gymnasium
- Billiards / Snooker
- Table Tennis
- Board Games
- Golf Simulator
- Multi-purpose Hall
- Cafeteria
- Theatre
- Guest Suites
- Squash Court
- Badminton Court
- Tennis Court
- Basketball Court
- Children's Play Area
- Central Greens
- Pet Park



Swimming Pool



Clubhouse and Swimming Pool



Clubhouse and Swimming Pool



Billiards



Gymnasium





The Terrace



Fact File

Windmills
of Your
Mind

Whitefield

Project

Land Area	24 Acres
Total Number of Units	405
Available Products	D60v1a, D60v1b, D60v1pa, D60v1pb
Approvals Obtained	AIRPORT, BWSSB, BESCOM, FIRE, MOEF, KSPB, BDA, BBMP
Project Status	Occupancy Certificate Received

Location

Natural Features	Natural lake adjacent to site
Distance from CBD [Km]	17.2 km to MG Road
Distance from Airport [Km]	45.4 km to BIA
Nearest Hospital [Km]	2.3 km to Manipal Hospital
Nearest Good School [Km]	0.5 km to Gopalan International School
Nearest Upmarket Mall [Km]	3 km to Forum Shantiniketan Mall
Nearest 5 Star Hotel [Km]	1 km to Marriott Hotel



Come discover our homes.

To book an exclusive tour of our Experience Homes, mail us at discover@total-environment.com

www.total-environment.com

TotalEnvironment
Homes